

Accessories for ESS20-0..

Description

Module 17plus is a power distribution system for use with electronic circuit breaker ESS20-0..

Each module accommodates two breakers with an individual housing width of only 12.5 mm and fits onto all industry standard mounting rails.

The two-way modules can be interconnected to provide as many ways as required with a terminal block fitted at each end for connection of signalling circuits. A distribution busbar can be fitted on the supply side of the modules (positive pole) though each pole of multipole circuit breakers must be individually connected.

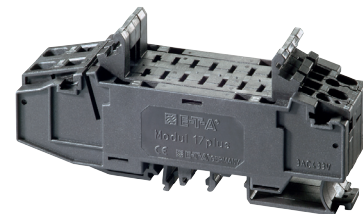
Electrical connections are by means of spring-loaded terminals. The reference potential for the ESS20-0.. (Gnd pin 11) is also looped through and connected to the terminals at the sides.

The integral make contact of the ESS20-001 (SC-SI) can be tapped at terminal 12 of the relevant channel (individual signalisation).

The integral make contact of the ESS20-002 (SC-SI) can be tapped at terminal 12 of the relevant channel (individual signalisation).

The ESS20-003 has an integral signal contact (change-over contact). The contact SC-SO is used for group fault signalisation. For this purpose the contacts for signalisation are connected in series in the Module 17plus and are connected to the terminal blocks via two terminals (13,14). It is possible with a test probe to contact the series connection in each module and detect possible interruptions.

All internal wirings for the ground potential and the group signal are established by the modular mounting of the individual Modules 17plus.



17plus

Technical data

Connection Spring-loaded terminals for solid conductors and stranded cables with and without wire end ferrules. Please use appropriate screw driver size (SD) for removing the spring loaded terminals.

cable	cross section of connecting cable	screw driver	stripped length
Line feed (1)	1.5-10 mm ²	3 (1.0 x 5.5)	12 mm
Load output (2)	0.25-4 mm ²	1 (0.6 x 3.5)	12 mm
Signalisation terminals (11, 13, 14)	0.25-2.5 mm ²	1 (0.6 x 3.5)	10 mm
Signalisation terminal (12)	0.25-1.5 mm ²	0 (0.4 x 2.5)	9 mm

Test probe for testing the group signal for line interruption: ≤ 2 mm ø

Voltage rating (without ESS20-0..): AC 250 V; 3 AC 433 V; DC 65 V

Current rating (without ESS20-0..)

LINE feed (1)	50 A
LOAD output (2)	25 A
Reference potential Gnd (11)	10 A
Individual signal (12)	1 A (with ESS20-0..: 0.5 A)
Group signal /(13-14)	1 A (with ESS20-0..: 0.5 A)

Internal resistance values (without ESS20-0..)

LINE-LOAD (1-2)	≤ 5 mΩ
Group signal (13-14) per module	≤ 8 mΩ per pole
	+ 5 mΩ for each additional module

Vibration 5 g (57-500 Hz) ± 0.38 mm (10-57 Hz), to IEC 60068-2-6, test Fc, 10 frequency cycles/axis

Shock 25 g (11 ms) to IEC 60068-2-27, test Ea 11 ms half sine

Corrosion 96 hours at 5 % salt mist, to IEC 60068-2-11, test Ka

Humidity 240 hours at 95 % RH to IEC 60068-2-78, test Cab

Dielectric strength of Module 17plus (without ESS20-0..)

between main circuits (without busbar):	1,500 V
main circuit to auxiliary circuit:	1,500 V
between auxiliary circuits:	1,500 V

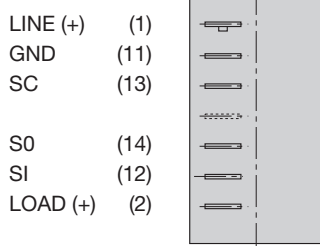
Mass: Module 17plus (centre piece) approx. 85 g
terminal blocks (pair) approx. 30 g

Ordering information

17PLUS-Q02-00	Module 17plus, centre piece, two-way
17PLUS-QA0-LR	one each left- and right-side terminal block for supply feed from the side by means of screw terminal, connection of signalisation etc.

Pin configuration, fitted with ESS20-0..

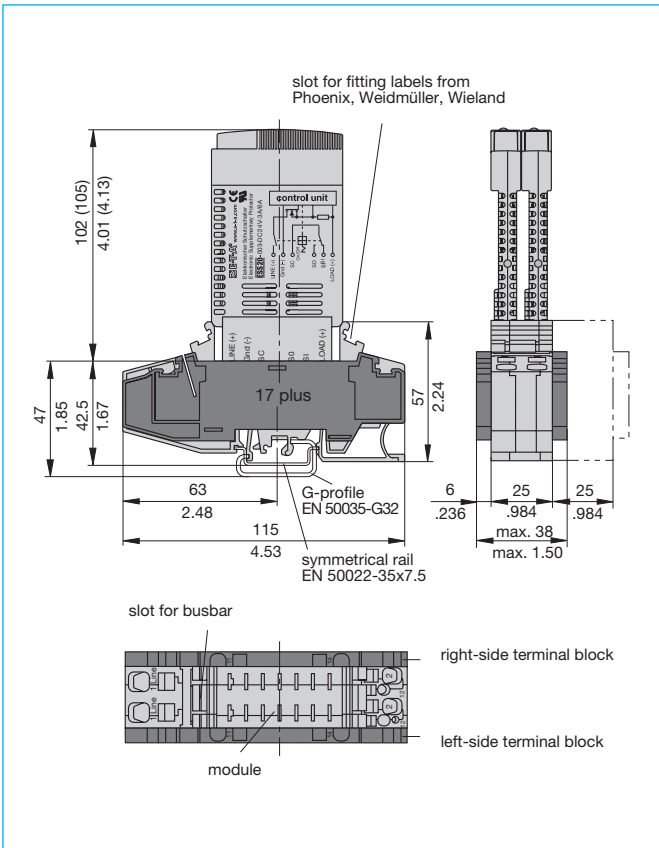
ESS20-0.. Module 17 plus



Approvals

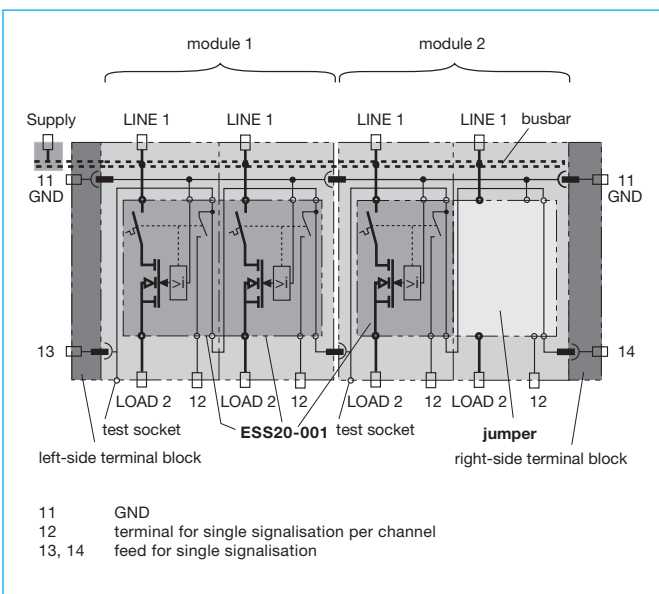
Authority	Voltage ratings	Current ratings
UL 60950	AC 250 V; DC 80 V	50 A

Dimensions

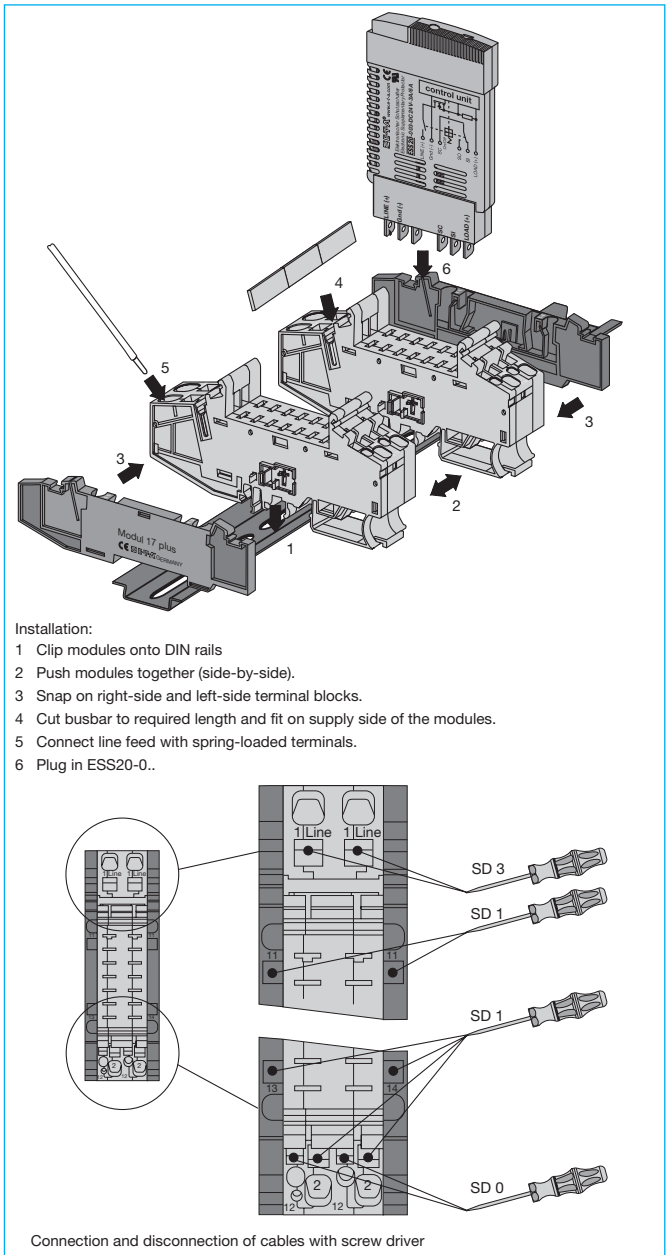


This is a metric design and millimeter dimensions take precedence (mm / inch)

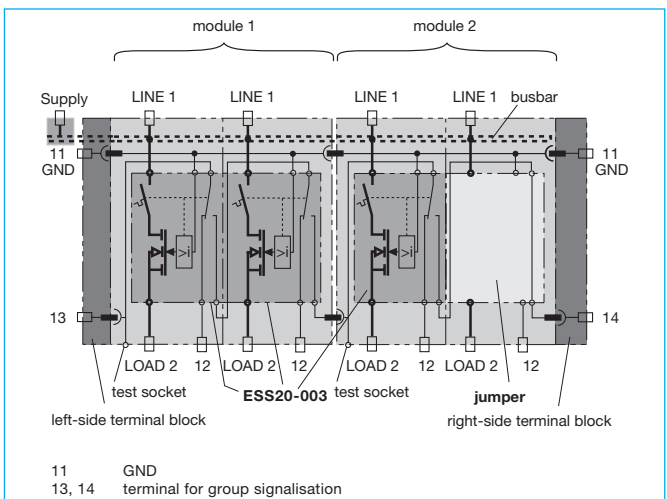
Connection diagram for ESS20-001



Installation example



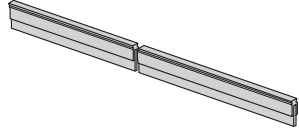
Connection diagram for ESS20-003



Accessories

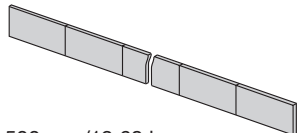
Busbar 32 A

- X 222 005 01** blue insulation, 500 mm/19.68 in.
 - X 222 005 02** red insulation, 500 mm/19.68 in.
 - X 222 005 03** grey insulation, 500 mm/19.68 in.
- "up to 32 A continuous load"



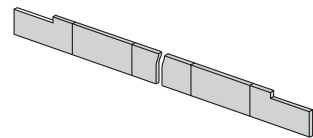
Busbar 50 A

- Y 307 016 01** non-insulated, 500 mm/19.68 in.
- "up to 50 A continuous load; plugged in completely, protected against brush contact"



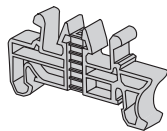
Busbar 50 A

- Y 307 016 11** non-insulated, 500 mm/19.68 in.
- "up to 50 A continuous load"



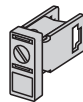
End bracket

- X 222 004 01**
- Width 10 mm



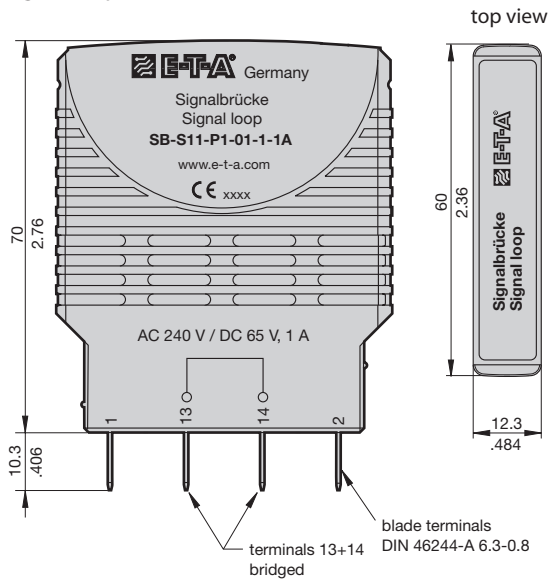
Screw terminal for busbar

- X 211 156 01** non insulated



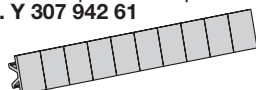
Jumper

- SB-S11-P1-01-1-1A**



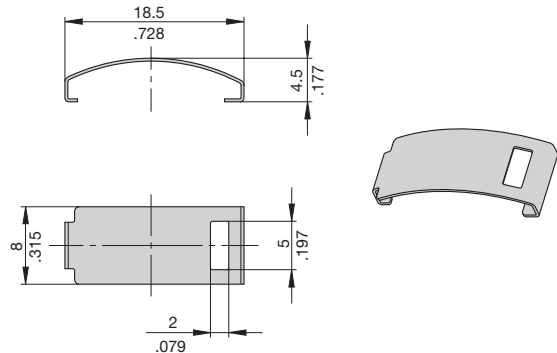
Labels

- marking area 6 x 10 mm
- (packing unit 10 pcs = 1 strip
- part. no. **Y 307 942 61**



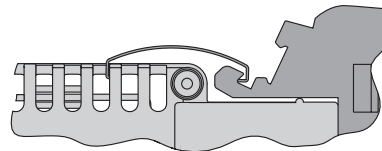
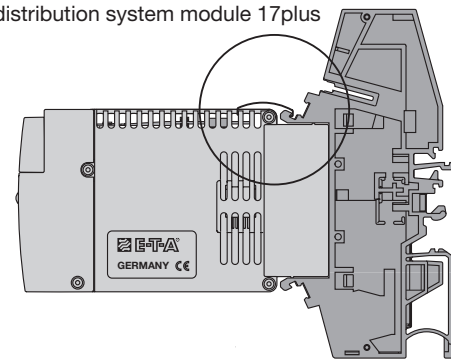
Accessories for ESS20-0..

Retaining clip Y 307 754 01

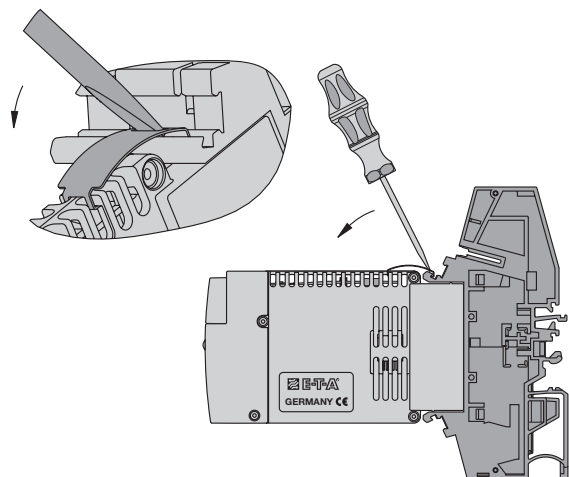


Mounting of retaining clip

ESS20 with retaining clip **Y 307 754 01**
for power distribution system module 17plus



Removal of retaining clip Y 307 754 01



This is a metric design and millimeter dimensions take precedence ($\frac{\text{mm}}{\text{inch}}$)

